



Providing Exceptional Personal Service



5 OFFICES



1 BATH



ABUNDANT
PARKING

1,328 SF +/-

\$1750 / MONTH

7072 EAST FISH LAKE RD MAPLE GROVE, MN

Spacious office condo in Lakeway Office Park located between Bass and Weaver Lake roads. Easy to find with great highway access to Highways I-494 and I-694. Conveniently located within two miles of Maple Grove businesses, including the prominent Arbor Lakes and Plymouth dining and shopping areas.

Bring your professional business services to this association maintained office park. 5 private offices, a welcoming reception area, private bathroom and a scenic court yard accompanies and surrounds your staff's next office condo!



Providing Exceptional Personal Service

www.rocksolidcos.com

ROCK SOLID Companies is
Your FULL SERVICE Real
Estate Brokerage

Commercial, Property Management,
Troubled Assets, Court Receivership,
Investment/Equity, 1031 Exchange
Residential, Property Development
and Vacation/Coastal Properties.
Licensed in Minnesota & Florida

Ron Touchette BROKER

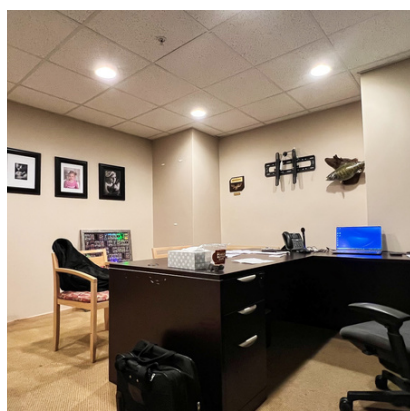
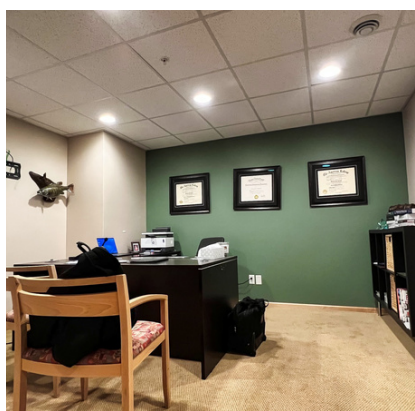
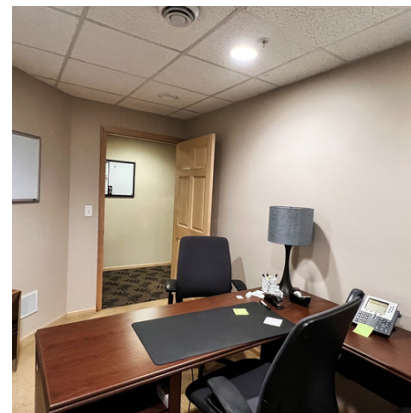
612.435.7777

ron@rocksolidcos.com

Delivering Exceptional Positive Results

7078 E. Fish Lake Rd., Maple Grove, MN 55311 | Main: 612.435.7770 | Fax: 612.435.7771

7072 EAST FISH LAKE RD MAPLE GROVE, MN



Providing Exceptional Personal Service

www.rocksolidcos.com

Delivering Exceptional Positive Results

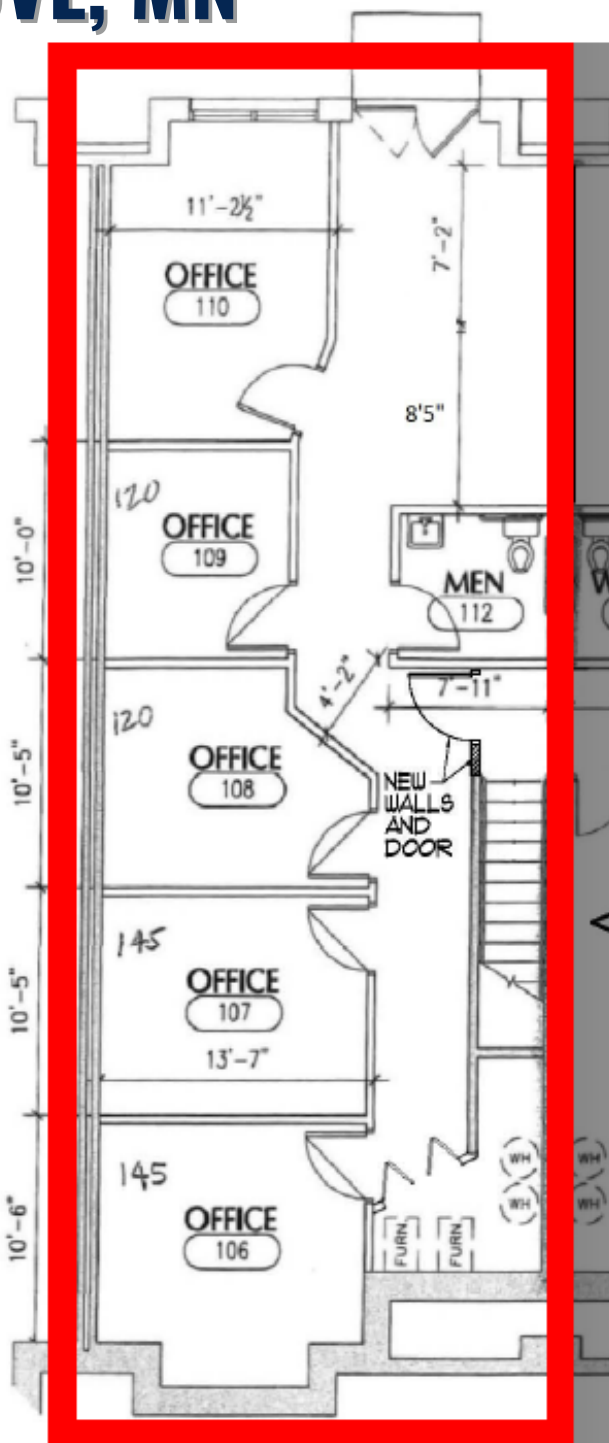
ROCK SOLID Companies is
Your FULL SERVICE Real
Estate Brokerage

Commercial, Property Management,
Troubled Assets, Court Receivership,
Investment/Equity, 1031 Exchange
Residential, Property Development
and Vacation/Coastal Properties.
Licensed in Minnesota & Florida

Ron Touchette BROKER
612.435.7777
ron@rocksolidcos.com

7078 E. Fish Lake Rd., Maple Grove, MN 55311 | Main: 612.435.7770 | Fax: 612.435.7771

7072 EAST FISH LAKE RD MAPLE GROVE, MN



Providing Exceptional Personal Service

www.rocksolidcos.com

Delivering Exceptional Positive Results

ROCK SOLID Companies is
Your FULL SERVICE Real
Estate Brokerage

Commercial, Property Management,
Troubled Assets, Court Receivership,
Investment/Equity, 1031 Exchange
Residential, Property Development
and Vacation/Coastal Properties.
Licensed in Minnesota & Florida

Ron Touchette BROKER
612.435.7777
ron@rocksolidcos.com

7078 E. Fish Lake Rd., Maple Grove, MN 55311 | Main: 612.435.7770 | Fax: 612.435.7771

7072 EAST FISH LAKE RD MAPLE GROVE, MN

Price: \$1,750 / month

Location: 7072 East Fish Lake Rd, Maple Grove, MN 55311

Legal Description: Lot 000 Block 000 CIC NO 1176 LAKEWAY OFFICE PARK UNIT NO 7072

PID Number: 2711922430085

Number of Buildings: 1

Number of Units: 1

Acres: Common

Year Built: 2003

Occupied: No

Zoning: Business/Commercial

Utilities: Water: city water, connected | Sewer: city sewer, connected | Fuel: natural gas | Heat: forced air

Number of Floors: 1

Total SF: 1,328 sf +/-

Building Type: Stick Built / Stucco / Brick Exterior

Parking: On Site lot with multiple spaces

Neighboring: Commercial surrounded by residential



Providing Exceptional Personal Service

www.rocksolidcos.com

ROCK SOLID Companies is
Your FULL SERVICE Real
Estate Brokerage

Commercial, Property Management,
Troubled Assets, Court Receivership,
Investment/Equity, 1031 Exchange
Residential, Property Development
and Vacation/Coastal Properties.
Licensed in Minnesota & Florida

Ron Touchette BROKER
612.435.7777
ron@rocksolidcos.com

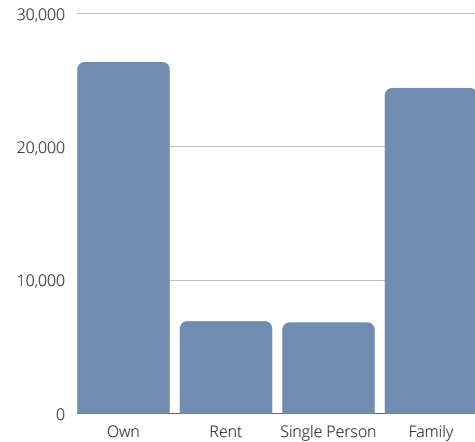
FACTS & DEMOGRAPHICS

CITY & STATE MAPLE GROVE, MN

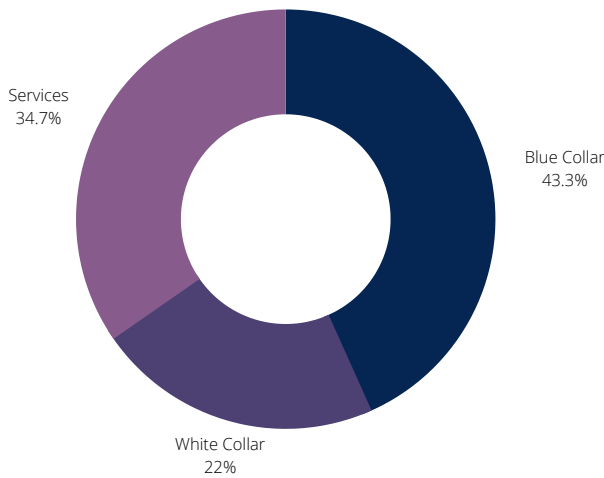
AVERAGE HH INCOME	MEDIAN HH INCOME
1-MILE \$72,057.86	1-MILE \$60,930.29
3-MILE \$70,674.28	3-MILE \$60,604.52
5-MILE \$78,374.96	5-MILE \$68,235.00

POPULATION	AVG. HH SIZE
81,349	2.64

HOME OWNERSHIP



EMPLOYMENT



54.15% EMPLOYED
1.55% UNEMPLOYED

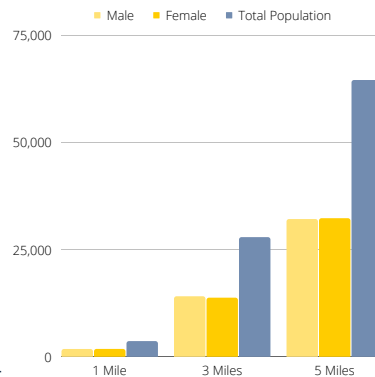
COMMUTE TIME
25.3 MINUTES

MEDIAN HOME VALUE
\$215,900

EDUCATION

HIGH SCHOOL GRAD: **29.29%**
SOME COLLEGE: **28.80%**
ASSOCIATES: **10.25%**
BACHELORS: **25.59%**

GENDER & AGE



POPULATION >25

1-MILE 2,309
3-MILE 18,199
5-MILE 41,783

*Data based on 2020 US Census & Moody's Analytics | Catylist



Providing Exceptional Personal Service

www.rocksolidcos.com

Delivering Exceptional Positive Results

ROCK SOLID Companies is
Your FULL SERVICE Real
Estate Brokerage

Commercial, Property Management,
Troubled Assets, Court Receivership,
Investment/Equity, 1031 Exchange
Residential, Property Development
and Vacation/Coastal Properties.
Licensed in Minnesota & Florida

Ron Touchette BROKER

612.435.7777

ron@rocksolidcos.com

7078 E. Fish Lake Rd., Maple Grove, MN 55311 | Main: 612.435.7770 | Fax: 612.435.7771